

Colour Selection Guide

Concrete placed over a large area can tend to look lighter than a brochure swatch or small representative sample. The method of finishing and surface texture can play a large part in the final outcome of your coloured concrete project.

For inspiration in selecting the colour for your concrete, look at areas such as the colour of your house, roofing and landscaping. Consider the use of the space. For example, a light coloured driveway may look great but if unsealed and heavily trafficked without regular maintenance (cleaning, sealing etc.) it could soon look dirty, particularly from oil spills or tyre marks.

If trying to match pre-existing concrete, it is worth considering selecting a contrasting or complementary colour, as the age difference between slabs will always create a variation of sorts. If using the same colour as previously then expect some visual difference both due to the age gap and also changes in the concrete raw materials. If matching

pre-existing concrete is critical then we recommend contacting us to discuss the project in detail.

If colour selection is critical to your project then we recommend placing a sample of concrete from your chosen concrete supplier and finished to the required specification for approval.

Whilst it is not imperative to seal your decorative concrete, we suggest considering applying a clear sealer. It helps to protect your investment; it is easier to clean and prevent stains. Some sealers will deliver a gloss, 'wet-look' and can intensify and darken the colour shade of your concrete. On-going maintenance will be required. Of course sealing the concrete may not always be warranted or desired.

If further advice is required in regards to sealing, please contact us or your local Coloumix reseller.

For further assistance please contact your local Coloumix reseller or Sales Representative.

Benefits of Coloumix

- /// Manufactured by Cathay Industries
- /// Coloumix pigments are weather resistant, UV light & alkali stable. They easily disperse in concrete.
- /// Packaging is designed to eliminate dust exposure and allow for safer handling practices by the end user.
- /// Manufactured under a strict quality control regime by an ISO9001 quality accredited company.
- /// Does not contain carbon or any ingredients unsuitable for use in concrete & cementitious applications.
- /// Nationwide sales, technical & customer service support.

Specifying a Colour

When specifying a colour simply select a colour from the Coloumix Colour Guide overlay. All colours shown overlay are based on grey cement. Identify your required concrete strength (MPa). For a detailed specification to incorporate into tender documents please contact a member of our sales team.

Addition Rates

For concrete strengths up to 32MPa the addition rates shown of 1 or 2

bags of Coloumix per cubic metre of concrete should be applied. For higher strength concrete, or where coloured concrete of different strengths are to be placed adjacent to one another, Cathay Industries should be contacted to recommend appropriate addition rates.

Finishing

Concrete integrally coloured with Coloumix oxides can be finished in many different ways to achieve a variety of different looks to suit any project.

The applied finish greatly influences the resulting concrete colour. From our experience, unsealed cove trowel and broom finishes may produce a lighter finish than the swatches shown. Similarly, more heavily worked or burnished finishes may result in a darker finish.

Packaging

Coloumix colours are supplied in our "Aquasac" cold-water soluble packaging system. Our Aquasac bags are made from the highest quality poly vinyl alcohol film and they are the only universal packaging system recommended for all concrete mix designs and finishes. Aquasac bags are ideal for even the most demanding concrete applications and finishes including shotcrete, exposed aggregate, etched, honed and polished finishes.



Cathay Industries (Australasia) Pty Ltd

Melb. (VIC. SA. TAS. WA) (03) 8787 4400
 Sydney (NSW. ACT) (02) 9336 1000
 Brisbane. (NT. QLD) 0458 066 416

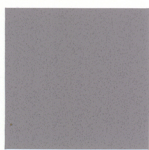


Internet

Visit the Coloumix website for inspiration, colours and photo examples
www.coloumix.com.au

Whilst we have taken every effort to produce a brochure to accurately represent concrete coloured with Coloumix colours, we can not guarantee the colour of the final concrete product. The colours shown in this brochure together with any samples or displays of Coloumix colours should be used as a guide to what may be achieved. All concrete colours will be influenced by a number of factors including the concrete raw materials (notably cement, supplementary cementitious material, aggregates and sand) that can vary significantly with different sources, curing techniques and weather conditions that are not under our control and that we can not guarantee. Concrete contains a number of fine materials and naturally occurring raw materials that are not colour-controlled. For projects where colour is important or critical we recommend obtaining or placing a representative concrete sample from your contractor, pre-caster or concrete product manufacturer. We recommend using contractors experienced in placing and finishing coloured concrete and viewing local examples of their work. All legislation is offered without warranty, representation, endorsement or licence and Cathay Industries does not assume legal responsibility for reliance upon the same.

WWW.COLOURMIX.COM.AU



Platinum (1)



Shadow (1)



Charcoal (1)



Jet Black (2)



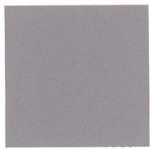
Bluestone (1)



Black Velvet (2)



Arctic (2)



Silver (1)



Soapstone (1)



Cargo (1)



Sandstone (1)



Suede (1)



Sepia (1)



Peppercorn (1)



Papyrus (1)



Fremantle (1)



Turmeric (1)



Desert Red (2)



Pumice (1)



Flint (1)



Ginger (1)



Cappuccino (1)



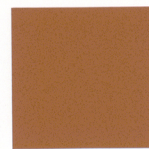
Pumpkin (1)



Colonial Red (1)



Limestone (2)



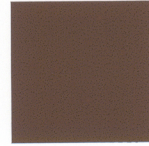
Terracotta (2)



Spice (1)



Venetian (2)



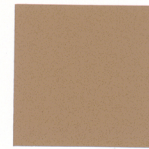
Jabiru (2)



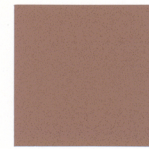
Everglade (1)



Dolomite (2)



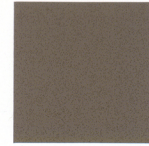
Arizona (1)



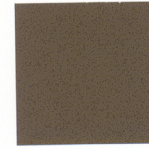
Aztec (1)



Red Rock (2)



Ravine (1)



Havana (2)

Colour dose based on addition to 25-32MPa Grey Concrete.

(1) 1 x 10kg bag per cubic metre
(2) 2 x 10kg bags per cubic metre